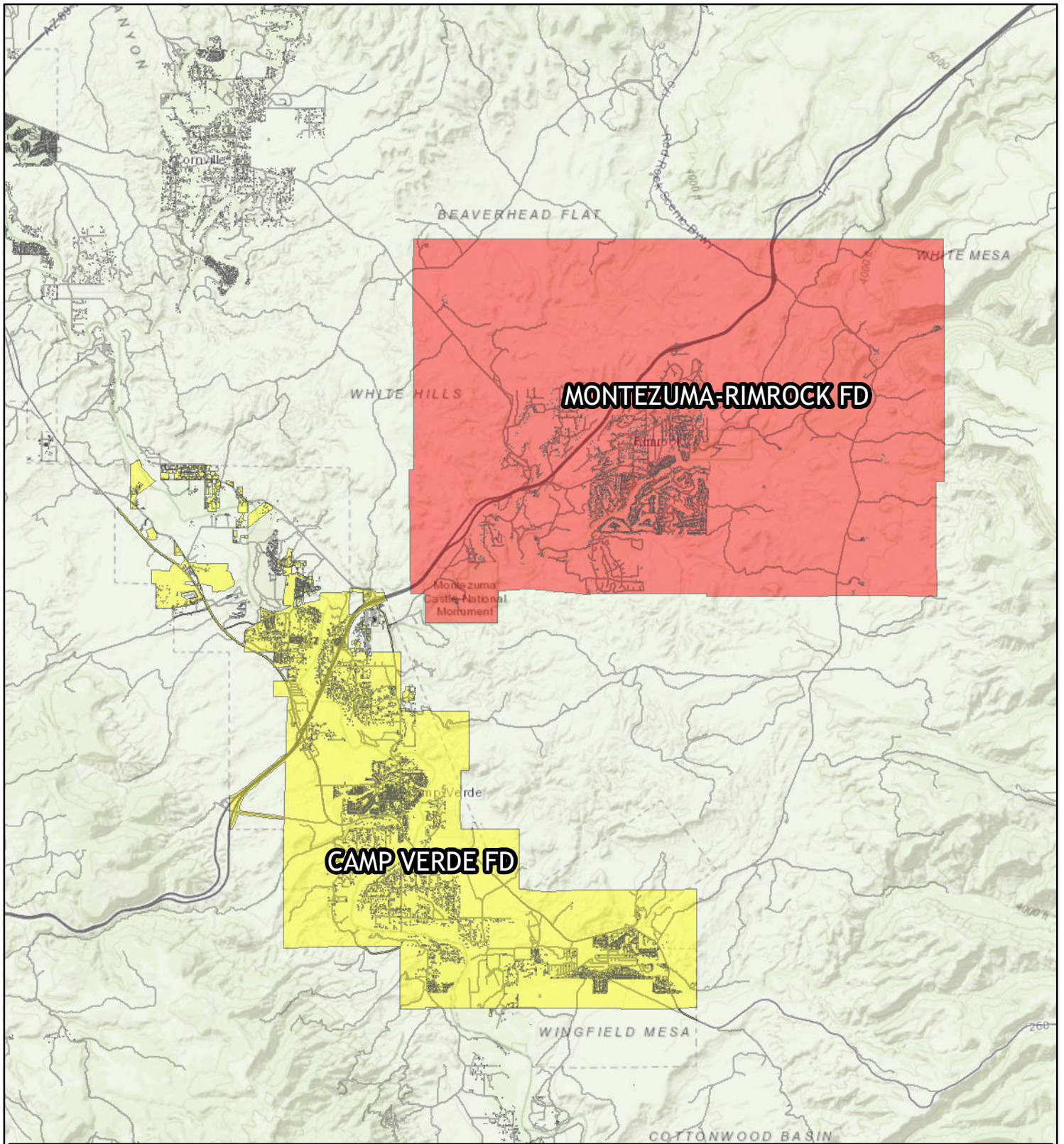


The Proposed Copper Canyon Fire & Medical District would encompass Montezuma-Rimrock & Camp Verde Fire Districts



Yavapai County assumes no responsibility for errors, omissions, and/or inaccuracies in this mapping product. This product is for informational purposes and may not have been prepared for, or be suitable for legal, engineering, or surveying purposes. Users of this information should review or consult the primary data and information sources to ascertain the usability of the information.

